

The background of the image is a close-up, angled view of several layers of carbon fiber fabric. The fabrics are in various colors: purple, teal, dark blue, and a light grey/white. They all exhibit the characteristic woven texture of carbon fiber. The layers are stacked and slightly offset, creating a sense of depth and texture.

HYPETEX[®]

COLOURED ADVANCED MATERIALS

**CARBON
FIBRE**

CARBON FIBRE RANGE

2/2 TWILL 220GSM

4

2/2 TWILL 260GSM

6

PLAIN WEAVE 220GSM

8

UNI DIRECTIONAL 100GSM

10

SPREAD TOW 120GSM

12

TWO-TONE SPREAD TOW 160GSM

14

HYPETEX® is responsible for converting **innovative** ideas into beautiful composite solutions. We are pioneers in adding **visual aesthetics** to high performance advanced **engineered materials**. We actively invest in re-discovering the use of carbon composites for visual application and beyond. A good design for us is one that meets both appearance and functionality, it is our **experience** and understanding of composite technology that makes us market leaders.

HYPETEX® colouring technologies are optimised for either **thermoset** or **thermoplastic** matrix systems, and are mechanically characterised to aid structural optimisation. All our materials are **quality assured** to the highest industry standards.

Our technologies use **water based** resins and **nano pigments** that puts colour onto the composite at the point of production, removing the need for expensive paints or coatings. The result is a colourful **premium aesthetic** part straight from the mould, **reducing post processing costs** and offering a more **environmentally friendly** colouring solution.

HYPETEX® material solutions include premium traditional **woven** and **spread tow** fabrics (see following pages) which are run frequently. Alternative weights or tow size are also available upon request. Our colouring technology adds a binder to the fabric which enhances fabric stability during cutting and preforming operations.

HYPETEX® also support **non woven UD**, and bespoke fabric **designs** or specific materials as required by our clients.

2/2 TWILL

220GSM

220GSM / 2x2TW / FT300B 3K 1250mm

HYPETEX® 220gsm is a 205 gsm twill carbon that has good pliability for forming complex contours and it is better at maintaining its fabric stability and less potential stress concentrations. Slightly looser weave increases the drapability compared to the heavier 260gsm fabric.

MATERIAL

Material(s)	Carbon
Fibre(s)	High Strength (HS)
Number of filaments	3K

CONSTRUCTION

Total weight	220±3% gsm
Fibres orientation	0°/90° (BT)
Warp	5.1 ends/cm
Weft	5.1 ends/cm
Pattern	Twill 2/2

BENEFITS

- Lighter and more flexible than the 260gsm 2/2 twill
- Outstanding visual quality for cosmetic parts
- Excellent fibre alignment and flat weft yarn insertion
- Ideal for prepreg and infusion processes



CHAPEL

Pantone 282c



YAZ

Pantone 627c



MARGAUX

Pantone 262c



OAK

Pantone 490c

2/2 TWILL



TITANIUM

Pantone 877c



COPPER

Pantone 725c



MICHELANGELO

Pantone 2427c



TENDULKAR

Pantone 3005c



JET BLACK

Pantone 6c



ASPREY

Pantone 2090c



SPA

Pantone 7725c



ZLATAN

Pantone 102c



MALABAR

Pantone 144c



ENZO

Pantone 711c



PROST

Pantone 288c



BOLT

Pantone 7765c



ZIDANE

Pantone 655c



SUZUKA

Pantone 218c

2/2 TWILL

260GSM

260GSM / 2x2TW / FT300B 3K 1000mm / 1250mm

HYPETEX® 260gsm is a 245gsm twill carbon that has good pliability for forming complex contours and it is better at maintaining its fabric stability and less potential stress concentrations. The tighter weave than the 210gsm gives the fabric an increased stability but less drapability.

MATERIAL

Material(s)	Carbon
Fibre(s)	High Strength (HS)
Number of filaments	3K

CONSTRUCTION

Total weight	260±3% gsm
Fibres orientation	0°/90° (BT)
Warp	6.1 ends/cm
Weft	6.1 ends/cm
Pattern	Twill 2/2

BENEFITS

- Outstanding visual quality for cosmetic parts
- Excellent fibre alignment and flat weft yarn insertion
- Ideal for prepreg and infusion processes



CHAPEL

Pantone 282c



YAZ

Pantone 627c



MARGAUX

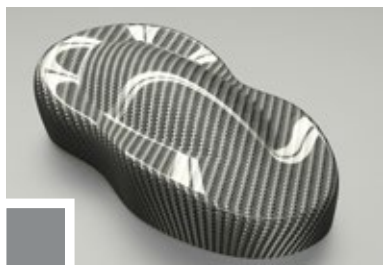
Pantone 262c



OAK

Pantone 490c

2/2 TWILL



TITANIUM

Pantone 877c



COPPER

Pantone 725c



MICHELANGELO

Pantone 2427c



TENDULKAR

Pantone 3005c



JET BLACK

Pantone 6c



ASPREY

Pantone 2090c



SPA

Pantone 7725c



ZLATAN

Pantone 102c



MALABAR

Pantone 144c



ENZO

Pantone 711c



PROST

Pantone 288c



BOLT

Pantone 7765c



ZIDANE

Pantone 655c



SUZUKA

Pantone 218c

PLAIN WEAVE

220GSM

220GSM / PW / FT300B 3K 1000mm / 1250mm

HYPETEX® 220gsm is a 200gsm plain weave carbon that looks symmetrical with a small checkerboard style appearance. In this weave the tows are woven in an over/under pattern. The short space between interlaces give the plain weave a high level of stability.

MATERIAL

Material(s)	Carbon
Fibre(s)	High Strength (HS)
Number of filaments	3K

CONSTRUCTION

Total weight	220±3% gsm
Fibres orientation	0°/90° (BT)
Warp	5.5 ends/cm
Weft	5.5 ends/cm
Pattern	Plain

BENEFITS

- Outstanding visual quality for cosmetic parts
- Excellent fibre alignment and flat weft yarn insertion
- Ideal for prepreg and infusion processes

PLAIN WEAVE



CHAPEL Pantone 282c



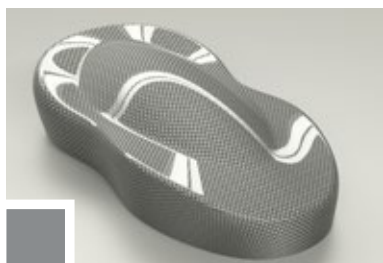
YAZ Pantone 627c



MARGAUX Pantone 262c



OAK Pantone 490c



TITANIUM Pantone 877c



COPPER Pantone 725c



MICHELANGELO Pantone 2427c



TENDULKAR Pantone 3005c



ASPREY Pantone 2090c



SPA Pantone 7725c



ZLATAN Pantone 102c



MALABAR Pantone 144c



PROST Pantone 288c



BOLT Pantone 7765c



ZIDANE Pantone 655c



SUZUKA Pantone 218c

UNI DIRECTIONAL

100GSM

100GSM / UD / TR50S 15K 1000mm

HYPETEX® 100gsm is a 79gsm UD is a non-woven, featuring all fibres running in a single, parallel direction enabling a concentrated density of fibres that provide maximum longitudinal tensile potential. A PA web with a resin-compatible adhesive is used for fabric stability.

MATERIAL

Material(s)	Carbon
Fibre(s)	High Stength (HS)
Number of filaments	15K

CONSTRUCTION

Total weight	100gsm
Fibres orientation	Uni Directional

BENEFITS

- Maximum longitudinal tensile potential
- Isotropic material
- Controlled constructions of precision parts and precise engineering in layups

UNI DIRECTIONAL



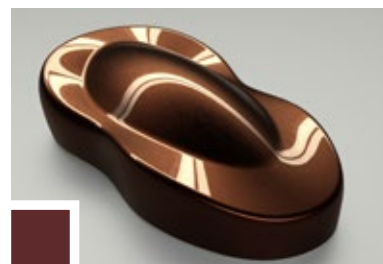
CHAPEL Pantone 282c



YAZ Pantone 627c



MARGAUX Pantone 262c



OAK Pantone 490c



TITANIUM Pantone 877c



COPPER Pantone 725c



MICHELANGELO Pantone 2427c



TENDULKAR Pantone 3005c



ASPREY Pantone 2090c



ZIDANE Pantone 655c



ZLATAN Pantone 102c



MALABAR Pantone 144c



ENZO Pantone 711c



PROST Pantone 288c



BOLT Pantone 7765c



JET BLACK Pantone 6c



SUZUKA Pantone 218c

SPREAD TOW

120GSM

120GSM / ST / TR50S 15K 1000mm

HYPETEX® 120gsm is a 110gsm spread-tow carbon fabric. Manufactured using a special 'spreading' technology to make the individual tows of carbon fibre very flat and wide. The result is a fabric that is smoother and flatter than a conventional woven cloth with less crimp, providing marginal stiffness advantages.

MATERIAL

Material(s)	Carbon
Fibre(s)	High Strength (HS)
Number of filaments	15K

CONSTRUCTION

Total weight	120±5% gsm
Fibres orientation	0°/90° (BT)
Warp tape	55gsm
Weft tape	55gsm
Stabilising material	10gsm
Pattern	Plain

BENEFITS

- Outstanding flat and smooth surface finish
- Ultra light and thin ply thickness for reduced weights
- Straighter fibre with reduced crimp optimise
- Ideal for prepreg and infusion processes

SPREAD TOW



CHAPEL

Pantone 282c



YAZ

Pantone 627c



MARGAUX

Pantone 262c



OAK

Pantone 490c



TITANIUM

Pantone 877c



COPPER

Pantone 725c



MICHELANGELO

Pantone 2427c



TENDULKAR

Pantone 3005c



ASPREY

Pantone 2090c



SPA

Pantone 7725c



ZLATAN

Pantone 102c



MALABAR

Pantone 144c



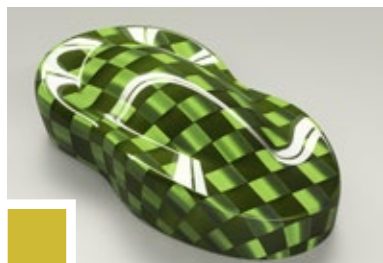
ENZO

Pantone 711c



PROST

Pantone 288c



BOLT

Pantone 7765c



JET BLACK

Pantone 6c



SUZUKA

Pantone 218c

TWO-TONE SPREAD TOW

160GSM

160GSM / ST / TR50S 15K 1000mm

HYPETEX® 160gsm is a 150gsm spread tow carbon fabric. This material is unique, with different colours of the warp and weft, made possible by the weaving technology used. This material can be supplied in plain or a two-by-one weave.

MATERIAL

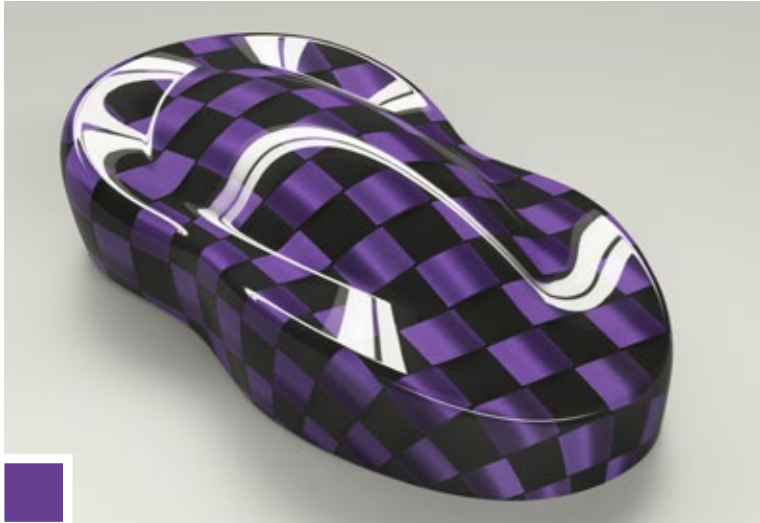
Material(s)	Carbon
Fibre(s)	High Strength
Number of filaments	15K

CONSTRUCTION

Total weight	160±5% gsm
Fibres orientation	0°/90° (BT)
Pattern	Plain Weave

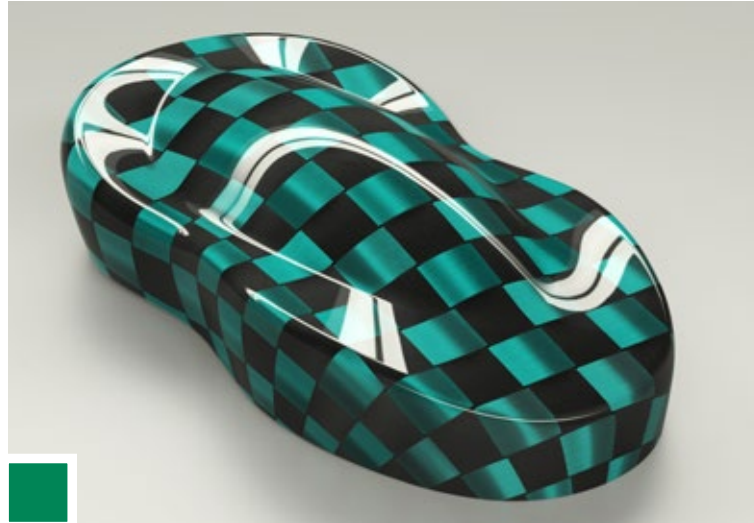
BENEFITS

- Outstanding flat and smooth surface finish
- Ultra light and thin ply thickness for reduced weights
- Straighter fibre with reduced crimp optimise
- The additional aesthetic benefit of two colours
- Ideal for prepreg and infusion processes



ASPREY

Pantone 2090c



SPA

Pantone 7725c

**TWO-TONE
SPREAD
TOW**



TENDULKAR

Pantone 3005c

The background of the image consists of several layers of woven fabric, likely technical or athletic in nature. The fabrics are in various colors: purple, teal, dark blue, and a light grey/white patterned fabric. They are draped and folded, creating a sense of depth and texture. The lighting highlights the intricate weave patterns of each material.

HYPETEX[®]

hypetex.com